



Client _____ Quantity _____

Project _____ Position _____

FUN 650

Model: F65/70CFE

Cod: MP01032122000

Technical data

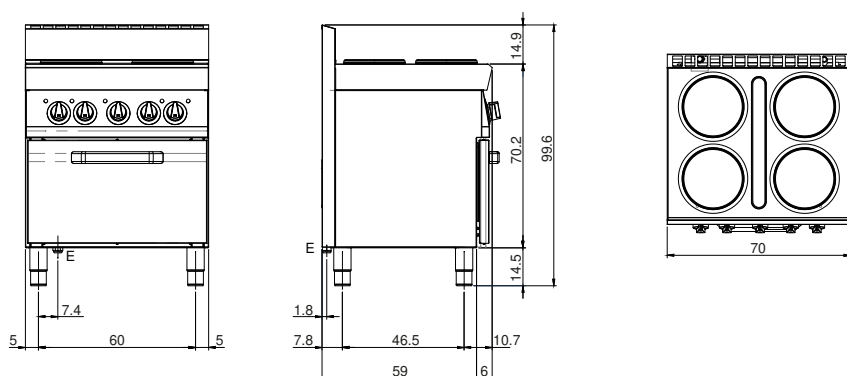
| | |
|------------------------------|--------------------------|
| Modularity: | Electric oven |
| Dimension (mm): | 700x650x850 |
| Oven dimension (mm): | 565x330x325 |
| Total electric power (kW): | 14,36 |
| Oven type: | Electric convection oven |
| Oven power (kW): | 3,96 |
| Oven temperature range (°C): | 50-300 |
| Electric power (V): | 380-415 |
| Ampere (A): | 29,5 |
| Phases: | 3N |
| Cable section (mmq): | 5G6 |
| Frequency (Hz): | 50 |
| Net volume (m3): | 0,387 |
| Packing dimensions (mm): | 776x776x1180 |
| Gross weight (kg): | 84 |
| Gross volume (m3): | 0,711 |

Features

| | |
|--------------|------------------------------------------------------------------------------------------------------------|
| Working top: | Made of AISI 304 stainless steel with a thickness of 10/10 mm |
| Knobs: | Knobs are made from a sturdy heat-resistant polymer blend and are equipped with liquid anti-leakage washer |
| Handles: | Brushed aluminum finish |

Electric range with 4 plates with electric convection oven. Top in AISI 304 stainless steel thickness 8/10; covering in AISI 430 stainless steel 8/10; bottoms and internal parts in AISI 430 steel; internal reinforcements made of anti-corrosion material. (aluminised sheet metal). Electric hob equipped with 4 cast iron plates Ø 22 cm with stainless steel edge sealed to top. 4 plates x 2.6 kW ea. Total power of hob 10.4 kW. Six different temperature adjustments for each plate. Indicator lights to show electrical power supplied and plates in operation. Internal oven dimensions 53x34x32.5h. Possibility for 3 pans GN 1/1 h. 6.5 cm. Thermal insulation of oven chamber and door. Forced convection electrical oven. Motor 0.18 kW. Fan rotor in stainless steel. 3 heating elements x 1.26 kW ea. Electric oven total power 3.78 kW. Main switch. Thermostat adjustable from 100° to 300° C. Indicator lights to show electrical power supplied and heating elements in operation. Total power 14.36 kW Electrical power supply V AC 400+3N 50÷60 Hz.

Technical draw



E: Electric power