



Client \_\_\_\_\_ Quantity \_\_\_\_\_

Project \_\_\_\_\_ Position \_\_\_\_\_

## FUN 600

Model: F60/90CFEE

Cod: MP01032121001

### Technical data

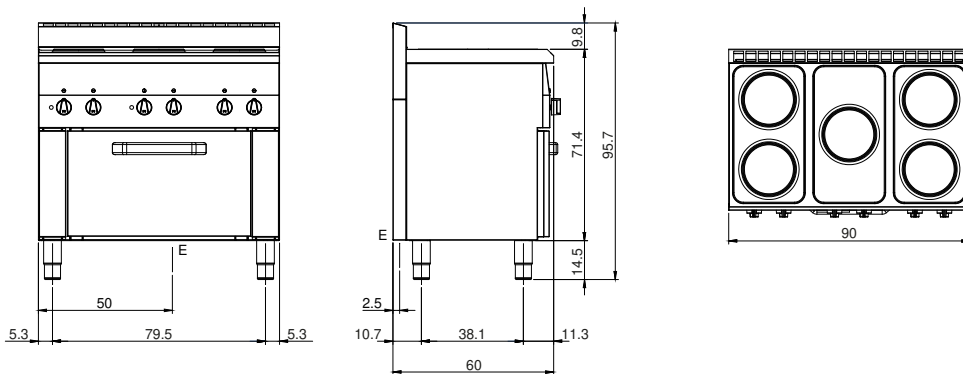
Modularity:	Top
Dimensions (mm):	900x600x850
Oven dimension (mm):	570x340x325
Total electric power (kW):	10,5
Oven type:	Electric convection oven
Oven power (kW):	3
Oven temperature range (°C):	50-300
Electric power (V):	380-415
Ampere (A):	20,5
Phases:	3N
Cable section (mmq):	5G2,5
Frequency (Hz):	50
Net volume (m3):	0,459
Packing dimensions (mm):	976x695x1170
Gross weight (kg):	85
Gross volume (m3):	0,794

### Features

Working top:	Made of AISI 304 stainless steel with a thickness of 8/10 mm
Knobs:	Knobs are made from a sturdy heat-resistant polymer blend
Handles:	Brushed aluminum finish
Flue:	Made in a single piece, which facilitates the alignment of the modules

Electric range with electric convection oven. Top with deep funnel in AISI 304 stainless steel; covering in AISI 430 stainless steel thickness 8/10; bottoms and internal parts in anti-corrosion material (aluminised sheet metal). Hob with cast iron electric plates Ø 180 mm with stainless steel edge sealed to top. Six different temperature adjustments for each plate. Indicator lights to show electrical power supplied and plates in operation. Power: 5 plates x 2 kW ea. Total power of hob: 10 kW. Electric convection oven in enamelled steel with double wall insulated door equipped with balancing springs. The thermally insulated chamber can hold pans in 4 positions. Forced convection operation by means a motor with a stainless steel fan rotor. Heating is by means of a thermostat-controlled heating element with temperature adjustment from 50 to 300°C + 1 grill heating element. The oven is equipped with a main switch, thermostat, indicator lights to show proper operation, chamber illumination light. Usable volume: 50 lt. Equipped with: 1 rack 445x350 mm. 1 drip pan 445x350x30h. mm. Oven power: 3 kW. Total power 11 kW. Electrical power supply VAC 400+3N 50 Hz.

**Technical draw**



E: Electric power