



Client _____ Quantity _____

Project _____ Position _____

FUN 700

Model: F70/70CFGB

Cod: MP01032113000

Technical data

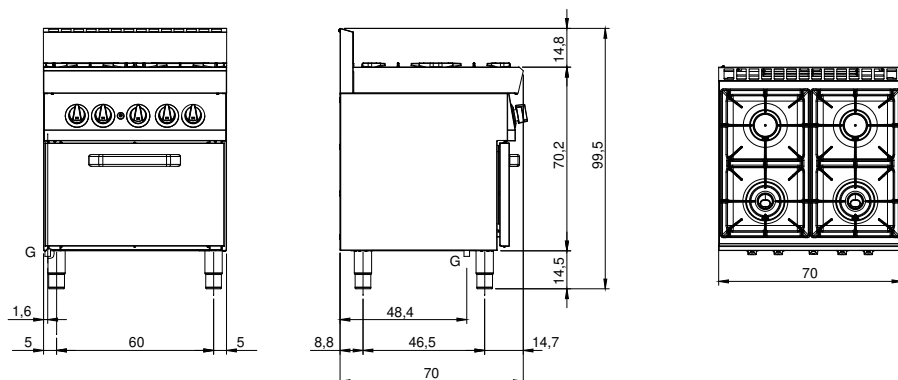
Modularity:	Gas oven
Dimension (mm):	700x700x850
Oven dimension (mm):	555x540x270
Total gas power (Kcal/h):	20121
Total gas power (kW):	23,4
Oven type:	Static oven
Oven power (kW):	5
Oven temperature range (°C):	150-300
Gas connection:	1/2"
Net volume (m3):	0,417
Packing dimensions (mm):	776x776x1180
Gross weight (kg):	95
Burner power 1 (kW):	5,5
Burner power 2 (kW):	3,7
Burner power 3 (kW):	5,5
Burner power 4 (kW):	3,7
Gross volume (m3):	0,711

Features

Burners:	Double or single crown cast iron version available with a pilot light
Grill:	Cast-iron with brass single- and double-crown burner with pilot
Working top:	Made of AISI 304 stainless steel with a thickness of 10/10 mm and removable enamelled containers
Knobs:	Knobs are made from a sturdy heat-resistant polymer blend and are equipped with liquid anti-leakage washer
Handles:	Brushed aluminum finish
Kit Gas:	Natural gas conversion kit 30/50 m/bar (tested with natural gas G20)

Gas range 4 burners with gas oven Top made of AISI 304 stainless steel thickness 8/10; covering in AISI 304 stainless steel thickness 8/10; bottoms and internal parts in AISI 430 steel; internal reinforcements made of anti-corrosion material (aluminised sheet metal). Equipped with high-power cast iron/brass rapid burners with bowls in enamelled steel that can be extracted for easy cleaning. Gas supplied by means of safety valve cocks with thermocouple and pilot burner for automatic burner lighting. Hob pan supports made of anti-acid enamelled cast iron. Static gas oven in enamelled steel with double wall insulated door equipped with hinges with balancing springs. The thermally insulated chamber is equipped with 3-position side rack supports which can be extracted for cleaning. Heating takes place by means of stabilized flame burner with piezoelectric ignition; gas is supplied by means of a thermostatic safety valve with thermocouple. Temperature adjustment from 150° to 300°C. Internal dimensions 530x540x280h. mm. - 1 rack 530x530 mm included. Upper level power (gas) 2 burners x 3.7 kW and 2 x 5.5 kW. Total power 5 kW. Total gas power 23.4 kW

Technical draw



G: Gas connection 1/2"