



Client _____ Quantity _____
Project _____ Position _____

ROC 900

Model: R90/40PCGB/P

Cod: MP01014114052

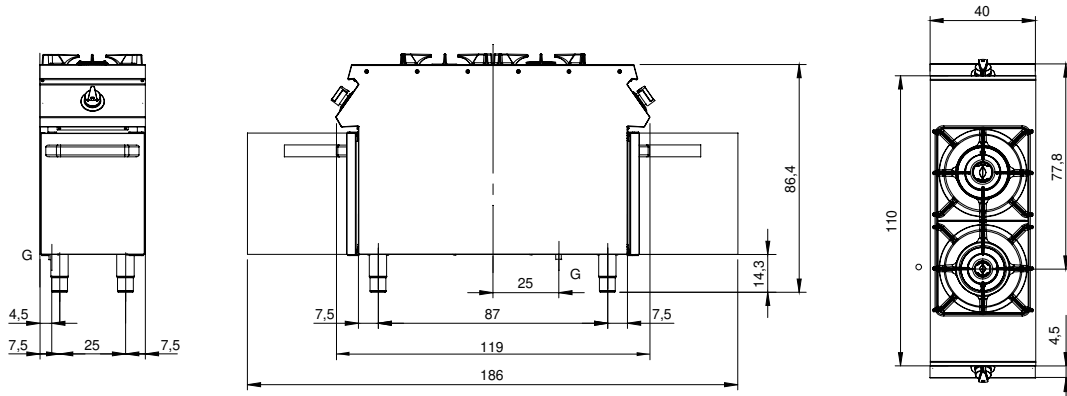
Technical data

Modularity:	On cabinet with door
Dimension (mm):	400x900x870
Total gas power (Kcal/h):	11178
Total gas power (kW):	13
Gas connection:	1/2"
Net volume (m3):	0,313
Packing dimensions (mm):	480x1026x1075
Gross weight (kg):	61,6
Burner power 1 (kW):	5,5
Burner power 2 (kW):	7,5
Gross volume (m3):	0,529

Features

Burners:	Single and double crown cast iron burners with brass burner cap
Grill:	For single burner in cast iron or stainless steel (optional) dishwasher safe
Working top:	Made of AISI 304 stainless steel with a thickness of 20/10 mm and enamelled containers
Knobs:	Made of aluminum with IPX5 water protection
Handles:	The brushed aluminum handles allow for a secure and sturdy grip with a ergonomic lines
Kit Gas:	Natural gas conversion kit 30/50 m/bar (tested with natural gas G20)

Technical draw



G: Gas connection 1/2"