



Client _____ Quantity _____
Project _____ Position _____

ROC 900

Model: R90/120PCG/P

Cod: MP01014114008

Technical data

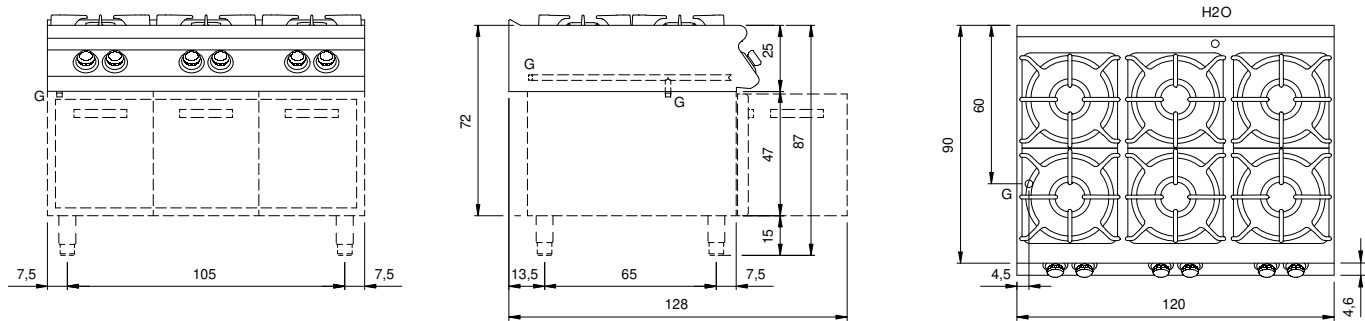
Modularity:	On cabinet with doors
Dimension (mm):	1200x900x870
Total gas power (Kcal/h):	44712
Total gas power (kW):	52
Gas connection:	1/2"
Net volume (m3):	0,94
Packing dimensions (mm):	1280x1026x1109
Gross weight (kg):	141,6
Burner power 1 (kW):	6
Burner power 2 (kW):	10
Burner power 3 (kW):	10
Burner power 4 (kW):	10
Burner power 5 (kW):	6
Burner power 6 (kW):	10
Gross volume (m3):	1,456

Features

Burners:	Single and double crown cast iron burners with brass burner cap
Grill:	For single burner in cast iron or stainless steel (optional) dishwasher safe
Working top:	Pressed top made of AISI 304 stainless steel 20/10 mm thick
Knobs:	Made of aluminum with IPX5 water protection
Handles:	The brushed aluminum handles allow for a secure and sturdy grip with a ergonomic lines
Kit Gas:	Natural gas conversion kit 30/50 m/bar (tested with natural gas G20)

Gas boiling unit with 6 burners, model on cabinet with doors. Side panels, bottom and back made in stainless steel. Pressed top made in AISI 304 thickness 20/10 designed for flush alignment. Gas supply by safety taps with thermocouple and pilot burner for the automatic ignition of main burner. Radiused corners top, easy to clean, equipped with high thick enamelled cast-iron hobs resistant to acid, alkali and flame. Rapid burners made in cast iron and brass sealed to the top, nr.4 burner 10 kW and nr.2 burner 6 kW. (Available burner powers 3,5 kW, 6 kW, 7,5 kW, 10 kW). Special design knobs to avoid water penetration in the control panel. Presses hinged doors Ergonomic handles. Base completely made in stainless steel. Presses hinged doors. Ergonomic handle. Adjustable feet made in stainless steel. IPX5 protection rating. Gas total power 52 kW.

Technical draw



G: Gas connection 1/2"