



Client _____ Quantity _____
Project _____ Position _____

ROC 700

Model: R70/120PCGB/P

Cod: MP01014113058

Technical data

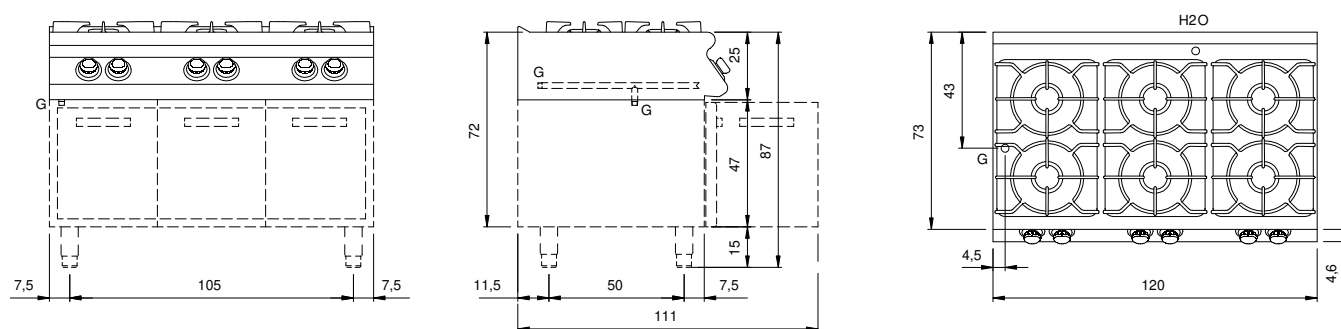
Modularity:	On cabinet with doors
Dimension (mm):	1200x730x870
Total gas power (Kcal/h):	22186
Total gas power (kW):	25,8
Gas connection:	1/2"
Net volume (m3):	0,762
Packing dimensions (mm):	1280x856x1109
Gross weight (kg):	126,1
Burner power 1 (kW):	5,5
Burner power 2 (kW):	3,7
Burner power 3 (kW):	3,7
Burner power 4 (kW):	3,7
Burner power 5 (kW):	5,5
Burner power 6 (kW):	3,7
Gross volume (m3):	1,215

Features

Burners:	Single and double crown cast iron burners with brass burner cap
Grill:	For single burner in cast iron or stainless steel (optional) dishwasher safe
Working top:	Made of AISI 304 stainless steel with a thickness of 20/10 mm and enamelled containers
Knobs:	Made of aluminum with IPX5 water protection
Handles:	The brushed aluminum handles allow for a secure and sturdy grip with a ergonomic lines
Flue:	Removable gas exhaust flue grill made of cast iron
Kit Gas:	Natural gas conversion kit 30/50 m/bar (tested with natural gas G20)

Gas boiling unit with 6 burners, model on cabinet with doors. Side panels, bottom and back made of stainless steel. Top made of AISI 304 thickness 20/10 designed for flush alignment. Gas supply by safety taps with thermocouple and pilot burner for the automatic ignition of main burner. Radiused corners top, easy to clean, equipped with enamelled cast-iron hobs resistant to acid, alkali and flame. Equipped with high-power cast iron/brass rapid burners with containers in enamelled steel that can be extracted for easy cleaning. nr.2 burners 5.5 kW and nr.4 burners 3.7 kW. Special design knobs to avoid water penetration in the control panel. Base completely made of stainless steel. Doors with stainless steel tubular handles. Adjustable feet made of stainless steel. IPX5 protection rating. Gas total power 25.8 kW.

Technical draw



G: Gas connection 1/2"