

Client _____ Quantity _____
Project _____ Position _____**FUN 700**

Model: F70/70PCE/T

Cod: MP01012123002

**Technical data**

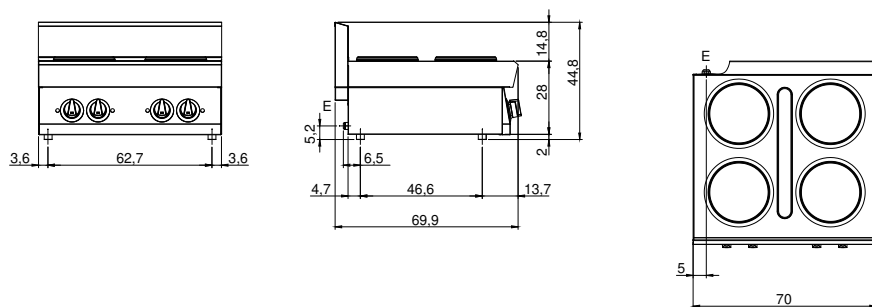
Modularity:	Top
Dimensions (mm):	700x700x300
Total electric power (kW):	10,4
Electric power (V):	380-415
Ampere (A):	24
Phases:	3N
Cable section (mmq):	5G4
Frequency (Hz):	50-60
Net volume (m3):	0,147
Packing dimensions (mm):	776x776x636
Gross weight (kg):	45
Gross volume (m3):	0,383

Features

Working top:	Made of AISI 304 stainless steel with a thickness of 10/10 mm
Knobs:	Knobs are made from a sturdy heat-resistant polymer blend and are equipped with liquid anti-leakage washer

Electric hob with 4 plates, model on cabinet with doors. Side panels, bottom and back made in stainless steel. Pressed top made in AISI 304 thickness 20/10 with control edge for liquid collection. Rear flue made in enamelled cast-iron. N° 4 square electric plates 300x300 mm each with 4 kW, equipped with safety thermostat and automatic recovery. 6 levels temperature control for each plate. Lamp on control panel to indicate the activation of electric supply and plates operation. Special design knobs to avoid water penetration in the control panel. Base completely made in stainless steel. Presses hinged doors Ergonomic handles. Adjustable feet made in stainless steel. IPX5 protection rating. Electric power supply VAC 400 3N 50÷60 Hz - 16 kW.

Technical draw



E: Electric power