

Client \_\_\_\_\_ Quantity \_\_\_\_\_  
 Project \_\_\_\_\_ Position \_\_\_\_\_

## FUN 600

Model: F60/30PVE/T

Cod: MP01012121006



### Technical data

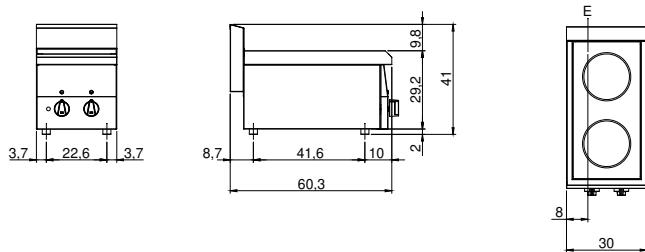
Modularity:	Top
Dimensions (mm):	300x600x300
Total electric power (kW):	3,6
Electric power (V):	380-415
Ampere (A):	8,5
Phases:	3N
Cable section (mmq):	5G1,5
Frequency (Hz):	50-60
Net volume (m3):	0,054
Packing dimensions (mm):	376x695x596
Gross weight (kg):	16
Gross volume (m3):	0,156

### Features

Working top:	Made of AISI 304 stainless steel with a thickness of 8/10 mm
Knobs:	Knobs are made from a sturdy heat-resistant polymer blend

Electric hob in pyroceram with 2 plates Top with deep funnel in AISI 304 stainless steel; covering in AISI 430 stainless steel thickness 8/10; bottoms and internal parts in anti-corrosion material (aluminised sheet metal). Hermetic hob easily accessible for cleaning. The cooking zones are highly flexible. They reach operating temperature quickly and are equipped with a device against overheating. Six different temperature adjustments for each plate. Indicator lights to show electrical power supplied and cooking zones in operation. Power: 2 zones x 1.8 kW. Total power 3.6 kW Electrical power supply V AC 400+3N 50÷60 Hz.

### Technical draw



E: Electric power