

Client _____ Quantity _____
 Project _____ Position _____

FUN 600

Model: F60/90PCEE/T

Cod: MP01012121005



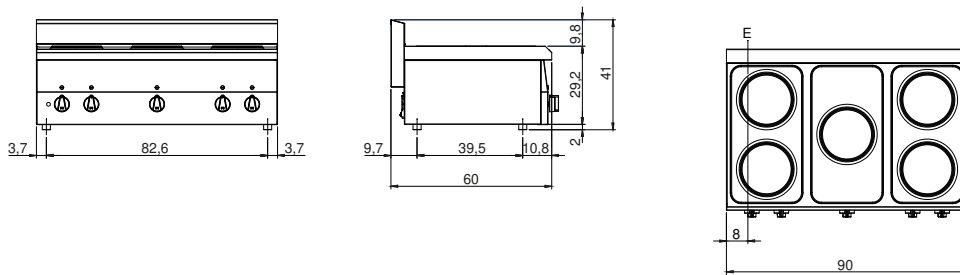
Technical data

| | |
|----------------------------|-------------|
| Modularity: | Top |
| Dimensions (mm): | 900x600x300 |
| Total electric power (kW): | 7,5 |
| Electric power (V): | 380-415 |
| Ampere (A): | 14 |
| Phases: | 3N |
| Cable section (mmq): | 5G2,5 |
| Frequency (Hz): | 50-60 |
| Net volume (m3): | 0,162 |
| Packing dimensions (mm): | 976x695x630 |
| Gross weight (kg): | 25 |
| Gross volume (m3): | 0,427 |

Features

| | |
|--------------|--|
| Working top: | Made of AISI 304 stainless steel with a thickness of 8/10 mm |
| Knobs: | Knobs are made from a sturdy heat-resistant polymer blend |
| Flue: | Made in a single piece, which facilitates the alignment of the modules |

Electric hob ECO with 5 plates Top with deep funnel in AISI 304 stainless steel; covering in AISI 430 stainless steel thickness 8/10; bottoms and internal parts in anti-corrosion material (aluminised sheet metal). Hob with cast iron electric plates Ø 180 mm with stainless steel edge sealed to top. Six different temperature adjustments for each plate. Indicator lights to show electrical power supplied and plates in operation. Power: 5 plates x 1,5 kW ea. Total power 7,5 kW. Electrical power supply VAC 400+3N 50÷60 Hz.

Technical draw

E: Electric power