

Client _____ Quantity _____
 Project _____ Position _____

FUN 600

Model: F60/90PCE/T

Cod: MP01012121004



Technical data

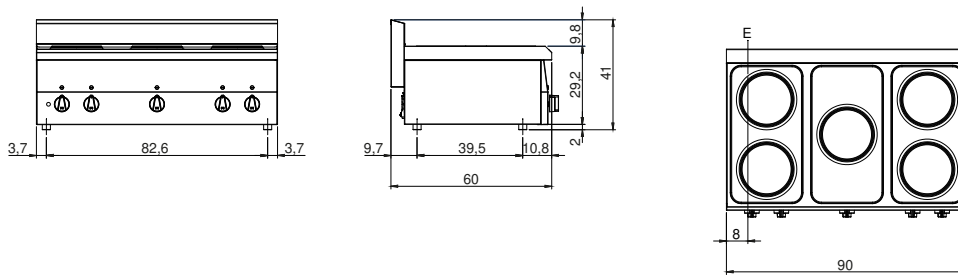
Modularity:	Top
Dimensions (mm):	900x600x300
Total electric power (kW):	10
Electric power (V):	380-415
Ampere (A):	18,5
Phases:	3N
Cable section (mmq):	5G2,5
Frequency (Hz):	50-60
Net volume (m3):	0,162
Packing dimensions (mm):	976x695x630
Gross weight (kg):	25
Gross volume (m3):	0,427

Features

Working top:	Made of AISI 304 stainless steel with a thickness of 8/10 mm
Knobs:	Knobs are made from a sturdy heat-resistant polymer blend
Flue:	Made in a single piece, which facilitates the alignment of the modules

Electric hob with 5 plates Top with deep funnel in AISI 304 stainless steel; covering in AISI 430 stainless steel thickness 8/10; bottoms and internal parts in anti-corrosion material (aluminised sheet metal). Hob with cast iron electric plates \varnothing 180 mm with stainless steel edge sealed to top. Six different temperature adjustments for each plate. Indicator lights to show electrical power supplied and plates in operation. Power: 5 plates x 2 kW ea. Total power 10 kW. Electrical power supply VAC 400+3N 50÷60 Hz.

Technical draw



E: Electric power