

Client _____ Quantity _____
 Project _____ Position _____

FUN 600

Model: F60/60PCEE/T

Cod: MP01012121003



Technical data

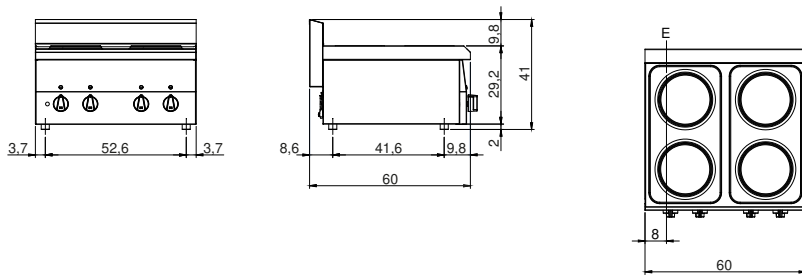
Modularity:	Top
Dimensions (mm):	600x600x300
Total electric power (kW):	6
Electric power (V):	380-415
Ampere (A):	14
Phases:	3N
Cable section (mmq):	5G2,5
Frequency (Hz):	50-60
Net volume (m3):	0,108
Packing dimensions (mm):	676x695x630
Gross weight (kg):	25
Gross volume (m3):	0,296

Features

Working top:	Made of AISI 304 stainless steel with a thickness of 8/10 mm
Knobs:	Knobs are made from a sturdy heat-resistant polymer blend
Flue:	Made in a single piece, which facilitates the alignment of the modules

Electric hob ECO with 4 plates Top with deep funnel in AISI 304 stainless steel; covering in AISI 430 stainless steel thickness 8/10; bottoms and internal parts in anti-corrosion material (aluminised sheet metal). Hob with cast iron electric plates Ø 180 mm with stainless steel edge sealed to top. Six different temperature adjustments for each plate. Indicator lights to show electrical power supplied and plates in operation. Power: 4 plates x 1,5 kW ea. Total power 6 kW. Electrical power supply V AC 400+3N 50÷60 Hz.

Technical draw



E: Electric power