

Client _____ Quantity _____
Project _____ Position _____

FUN 700

Model: F70/110PCGB/T

Cod: MP01012113004



Technical data

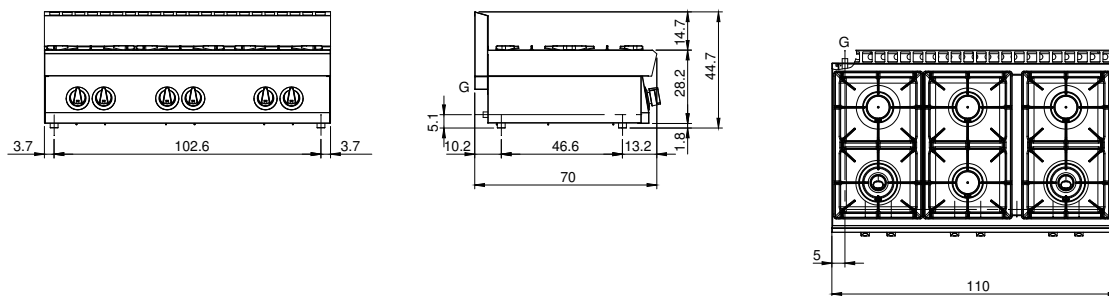
Modularity:	Top
Dimension (mm):	1100x700x300
Total gas power (Kcal/h):	22184
Total gas power (kW):	25,8
Gas connection:	1/2"
Net volume (m3):	0,231
Packing dimensions (mm):	1176x776x636
Gross weight (kg):	67
Burner power 1 (kW):	5,5
Burner power 2 (kW):	3,7
Burner power 3 (kW):	3,7
Burner power 4 (kW):	3,7
Burner power 5 (kW):	5,5
Burner power 6 (kW):	3,7
Gross volume (m3):	0,580

Features

Burners:	Double or single crown cast iron version available with a pilot light
Grill:	Cast-iron with brass single- and double-crown burner with pilot
Working top:	Made of AISI 304 stainless steel with a thickness of 10/10 mm and removable enamelled containers
Knobs:	Knobs are made from a sturdy heat-resistant polymer blend and are equipped with liquid anti-leakage washer
Kit Gas:	Natural gas conversion kit 30/50 m/bar (tested with natural gas G20)

Gas hob unit with 6 burners top. Top made of AISI 304 stainless steel thickness 10/10; covering in AISI 304 stainless steel thickness 8/10; bottoms and internal parts in AISI 430 steel; internal reinforcements made of anti-corrosion material (aluminised sheet metal). Equipped with high-power cast iron/brass rapid burners with bowls in enamelled steel that can be extracted for easy cleaning. Gas supplied by means of safety valve cocks with thermocouple and pilot burner for automatic burner lighting. Pan supports for hobs in acid-resistant enamelled cast iron. Upper level power 4 burners x 3.7 kW and 2 x 5.5 kW. Total power 25.8 kW.

Technical draw



G: Gas connection 1/2"