

Client \_\_\_\_\_ Quantity \_\_\_\_\_

Project \_\_\_\_\_ Position \_\_\_\_\_

## FUN 650

Model: F65/70PCGB/T

Cod: MP01012112002



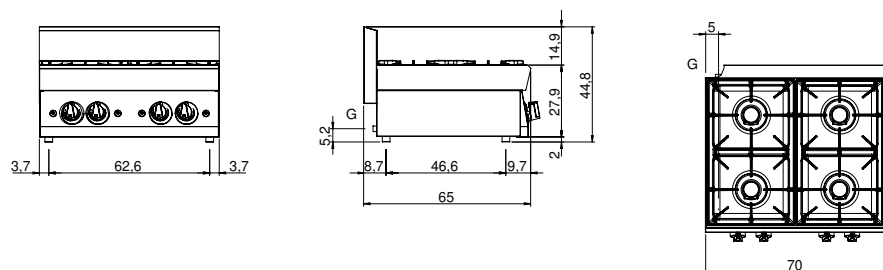
### Technical data

Modularity:	Top
Dimension (mm):	700x650x300
Total gas power (Kcal/h):	14790
Total gas power (kW):	17,2
Gas connection:	1/2"
Net volume (m3):	0,137
Packing dimensions (mm):	776x776x636
Gross weight (kg):	43
Burner power 1 (kW):	5
Burner power 2 (kW):	3,6
Burner power 3 (kW):	5
Burner power 4 (kW):	3,6
Gross volume (m3):	0,383

### Features

Burners:	Piezo ignition available in cast iron with single crown brass burner cap
Grill:	In cast iron with long spokes
Working top:	Made of AISI 304 stainless steel with a thickness of 10/10 mm and removable enamelled containers
Knobs:	Knobs are made from a sturdy heat-resistant polymer blend and are equipped with liquid anti-leakage washer
Kit Gas:	Natural gas conversion kit 30/50 m/bar (tested with natural gas G20)

## Technical draw



G: Gas connection 1/2"