

Client _____ Quantity _____
Project _____ Position _____

FUN 650

Model: F65/40PCGB/T

Cod: MP01012112000



Technical data

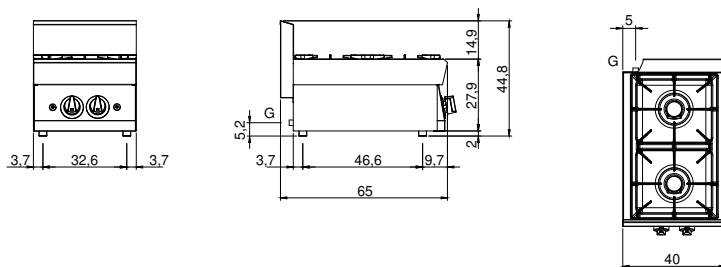
Modularity:	Top
Dimension (mm):	400x650x300
Total gas power (Kcal/h):	7395
Total gas power (kW):	8,6
Gas connection:	1/2"
Net volume (m3):	0,078
Packing dimensions (mm):	477x776x612
Gross weight (kg):	26
Burner power 1 (kW):	5
Burner power 2 (kW):	3,6
Gross volume (m3):	0,227

Features

Burners:	Piezo ignition available in cast iron with single crown brass burner cap
Grill:	In cast iron with long spokes
Working top:	Made of AISI 304 stainless steel with a thickness of 10/10 mm and removable enamelled containers
Knobs:	Knobs are made from a sturdy heat-resistant polymer blend and are equipped with liquid anti-leakage washer
Kit Gas:	Natural gas conversion kit 30/50 m/bar (tested with natural gas G20)

Gas boiling unit with 2 burners Top in AISI 304 stainless steel thickness 8/10; covering in AISI 430 stainless steel 8/10; bottoms and internal parts in AISI 430 steel; internal reinforcements made of anti-corrosion material. (aluminised sheet metal). Hob equipped with high-power rapid burners in cast iron/brass (1x3.6 kW + 1x5 kW). Bowls in enamelled steel that can be extracted for easy cleaning. Pan supports for hobs in acid-resistant enamelled cast iron Safety gas valve cocks with thermocouple, piezoelectric ignition of burners. Total power 8.6 kW

Technical draw



G: Gas connection 1/2"