

Client _____ Quantity _____
 Project _____ Position _____

FUN 600

Model: F60/90PCG/T

Cod: MP01012111001



Technical data

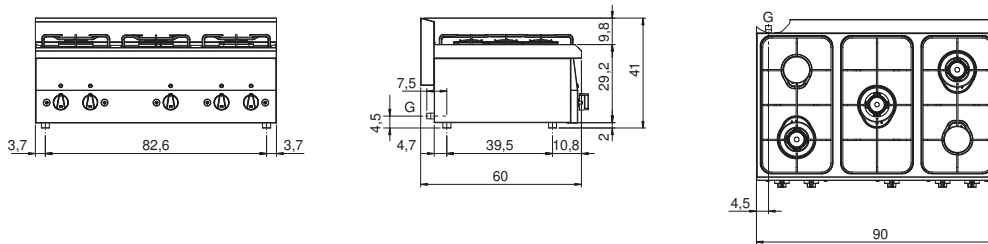
Modularity:	Top
Dimensions (mm):	900x600x300
Total gas power (Kcal/h):	14962
Total gas power (kW):	17,4
Gas connection:	1/2"
Net volume (m3):	0,162
Packing dimensions (mm):	976x695x630
Gross weight (kg):	30
Burner power 1 (kW):	3,6
Burner power 2 (kW):	3,3
Burner power 3 (kW):	3,3
Burner power 4 (kW):	3,6
Burner power 5 (kW):	3,6
Gross volume (m3):	0,427

Features

Burners:	Piezo ignition available in double or single crown
Grill:	Removable enamelled container for cleaning
Working top:	Made of AISI 304 stainless steel with a thickness of 8/10 mm
Knobs:	Knobs are made from a sturdy heat-resistant polymer blend
Flue:	Made in a single piece, which facilitates the alignment of the modules
Kit Gas:	Natural gas conversion kit 30/50 m/bar (tested with natural gas G20)

Gas hob, 5 burners. Worktop with deep drawing in AISI 304 stainless steel; casing in AISI 430 stainless steel, thickness 8/10; bottoms and internal parts in anti-corrosion material (aluminized sheet). Equipped with high power rapid burners. Gas taps with thermocouple safety valves. Piezoelectric ignition of the burners. Cooking surface grids in acid-resistant enamelled steel. 5 burners (3x3.6 kW + 2x3.3 kW) - total power 17.4 kW.

Technical draw



G: Gas connection 1/2"