



Client _____ Quantity _____
Project _____ Position _____

ROC 1100

Model: R110/100INDC/P

Cod: MP01135125124

Technical data

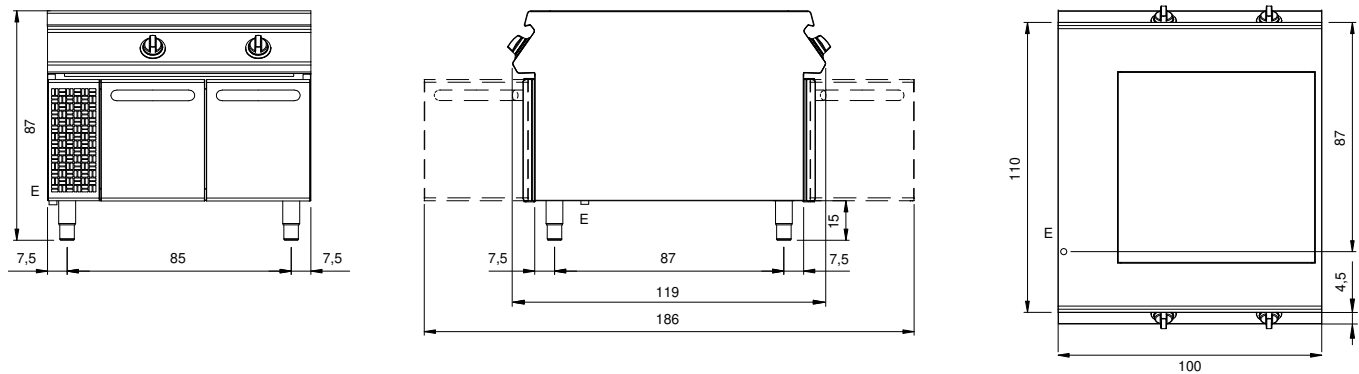
Modularity:	On cabinet with doors
Dimensions (mm):	1000x1100x870
Total electric power (kW):	20
Electric power (V):	380-415
Ampere (A):	30,5
Phases:	3N
Cable section (mmq):	5G6
Frequency (Hz):	50-60
Net volume (m3):	0,957
Packing dimensions (mm):	1280x1272x1274
Gross weight (kg):	140
Gross volume (m3):	2,074

Features

Working top:	Made of AISI 304 stainless steel with a thickness of 2 mm
Knobs:	Made of aluminum with IPX5 water protection
Handles:	The brushed aluminum handles allow for a secure and sturdy grip with a ergonomic lines

Electric full-coverage induction cooking top on cupboard with doors. Sides, bottom and rear panel in stainless steel. Cooking surface in glass-ceramic, hermetically sealed to the top. Heating is activated by a pot detection system when cookware is placed on the surface. Indicator lamp showing heating activation and correct appliance operation. Unit designed for head-to-head joint installation. Labyrinth-type control knobs preventing water infiltration during cleaning operations on both sides. Base entirely made of stainless steel. Hinged doors with tubular stainless-steel handles. Height-adjustable stainless steel feet. Protection rating IPX5. Electrical supply 400 VAC 3N 50/60 Hz – 20 kW.

Technical draw



E: Electric power