

Client _____ Quantity _____
 Project _____ Position _____

FUN 600

Model: F60/60FTG/SL/T

Cod: MP01372111012



Technical data

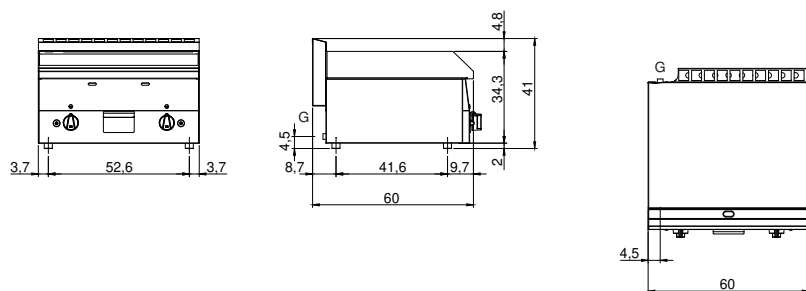
| | |
|-------------------------------------|-------------|
| Modularity: | Top |
| Dimensions (mm): | 600x600x300 |
| Total gas power (Kcal/h): | 8943 |
| Total gas power (kW): | 10,4 |
| Cooking zone dimensions 1 (LxD mm): | 596x470 |
| Gas connection: | 1/2" |
| Net volume (m3): | 0,108 |
| Packing dimensions (mm): | 676x695x630 |
| Gross weight (kg): | 55 |
| Gross volume (m3): | 0,296 |

Features

| | |
|------------------------------|--|
| Working top: | Made of AISI 304 stainless steel with a thickness of 8/10 mm |
| Material of plate: | Satin chrome |
| Plate finish: | Smooth |
| Knobs: | Knobs are made from a sturdy heat-resistant polymer blend |
| Flue: | Made in a single piece, which facilitates the alignment of the modules |
| Liquid collection container: | Removable and dishwasher safe |
| Plate: | Satin chrome plate |
| Upright Splash guard: | On two sides |
| Kit Gas: | Natural gas conversion kit 30/50 m/bar (tested with natural gas G20) |

Gas griddle with satin chrome smooth plate on open cabinet Top made of AISI 304 stainless steel thickness 10/10; covering in AISI 304 stainless steel thickness 10/10; external reinforcements made of anti-corrosion material (aluminised sheet metal); bottoms and internal parts in AISI 430 steel; flue cover in enamelled steel. satin chrome steel plate with high thermal conductivity for even temperature distribution. Provided with front groove, extractable drawer for grease collection and splash guard on three sides. Equipped with steel burner with pilot burner with piezoelectric ignition. Gas supplied by means of thermostatic safety valve with thermocouple. - 1 burner x 5.7 kW. Plate dimensions 395x550 mm. Set up on open cabinet.

Technical draw



G: Gas connection 1/2"