



Client _____ Quantity _____
Project _____ Position _____

ROC 700

Model: R70/80FTE/SL/A

Cod: MP01374123032

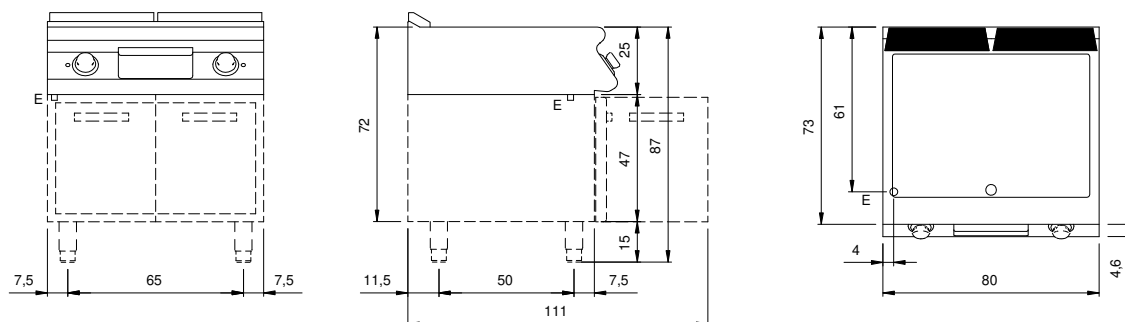
Technical data

Modularity:	On open cabinet
Dimension (mm):	800x730x870
Total electric power (kW):	10,8
Cooking zone dimensions 1 (LxD mm):	735x530
Electric power (V):	380-415
Ampere (A):	16,5
Phases:	3N
Cable section (mmq):	5G2,5
Frequency (Hz):	50-60
Net volume (m3):	0,508
Packing dimensions (mm):	880x856x1109
Gross weight (kg):	103
Gross volume (m3):	0,835

Features

Working top:	Made of AISI 304 stainless steel with a thickness of 20/10 mm
Material of plate:	Satin chrome
Plate finish:	Smooth
Knobs:	Made of aluminum with IPX5 water protection
Flue:	Removable gas exhaust flue grill made of cast iron
Liquid collection container:	Estraibile e lavabile in lavastoviglie
Plate:	Satin chrome plate
Upright Splash guard:	On two sides (optional)

Technical draw



E: Electric power