



Client _____ Quantity _____
Project _____ Position _____

ROC 700

Model: R70/40FTE/SR/A

Cod: MP01374123029

Technical data

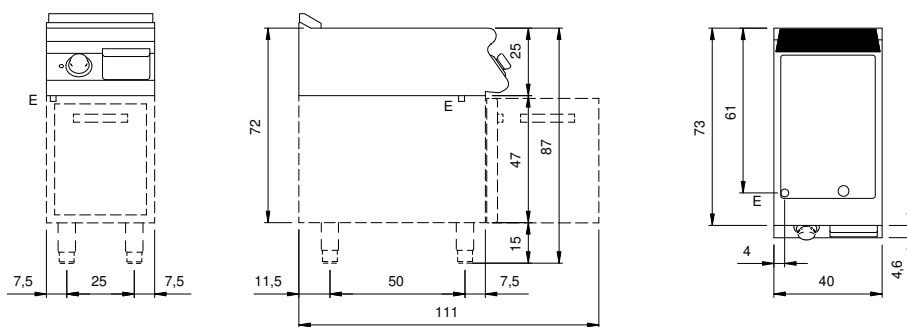
Modularity:	On open cabinet
Dimensions (mm):	400x730x870
Total electric power (kW):	5,4
Cooking zone dimensions 1 (LxD mm):	335x530
Electric power (V):	380-415
Ampere (A):	8,5
Phases:	3N
Cable section (mmq):	5G1,5
Frequency (Hz):	50-60
Net volume (m3):	0,254
Packing dimensions (mm):	480x856x1075
Gross weight (kg):	61,1
Gross volume (m3):	0,442

Features

Working top:	Made of AISI 304 stainless steel with a thickness of 20/10 mm
Material of plate:	Satin chrome
Plate finish:	Ribbed
Knobs:	Made of aluminum with IPX5 water protection
Flue:	Removable gas exhaust flue grill made of cast iron
Liquid collection container:	Removable and dishwasher safe
Plate:	Satin chrome plate
Upright Splash guard:	On two sides (optional)

Electric griddle with grooved satin chrome plate, model on open counter. Side panels, bottom and back made in stainless steel. Top made in AISI 304 thickness 20/10. Rear flue made in enamelled cast-iron. designed for flush alignment. Recessed (4 cm) hotplate fully welded and sealed to the top. Hard chrome plated hotplate with mirror polished surface with cold zone at the front. Round hole and extractable drawer for grease drain and collection. Plate dim.335x530 mm. Heating by means of Incoloy 800 armored heating elements. Temperature control by means of thermostat. Safety thermostat. Lamp on control panel to indicate heating activation. Special design knobs to avoid water penetration in the control panel. Base completely made in stainless steel. Adjustable feet made in stainless steel. IPX5 protection rating. Electric power supply VAC 400 3N 50±60 Hz - 5.4 kW.

Technical draw



E: Electric power