

Client \_\_\_\_\_ Quantity \_\_\_\_\_  
 Project \_\_\_\_\_ Position \_\_\_\_\_

## ROC 700

Model: R70/40FTE/SL/T

Cod: MP01374123025



### Technical data

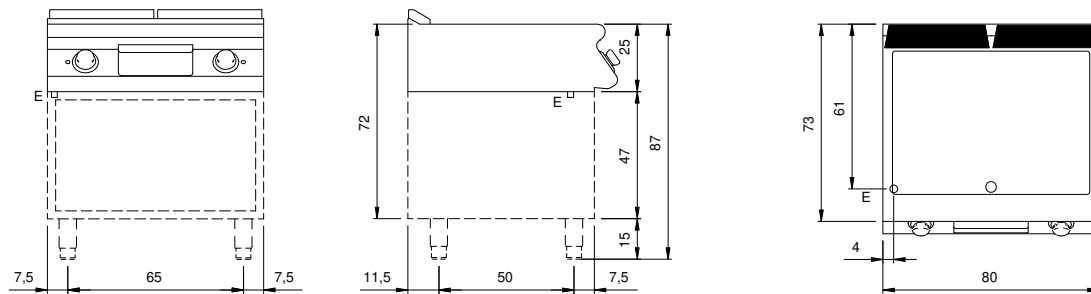
Modularity:	Top
Dimensions (mm):	400x730x280
Total electric power (kW):	5,4
Cooking zone dimensions 1 (LxD mm):	335x530
Electric power (V):	380-415
Ampere (A):	8,5
Phases:	3N
Cable section (mmq):	5G1,5
Frequency (Hz):	50-60
Net volume (m3):	0,082
Packing dimensions (mm):	480x856x475
Gross weight (kg):	48,4
Gross volume (m3):	0,195

### Features

Working top:	Made of AISI 304 stainless steel with a thickness of 20/10 mm
Material of plate:	Satin chrome
Plate finish:	Smooth
Knobs:	Made of aluminum with IPX5 water protection
Flue:	Removable gas exhaust flue grill made of cast iron
Liquid collection container:	Removable and dishwasher safe
Plate:	Satin chrome plate
Upright Splash guard:	On two sides (optional)

Electric griddle with smooth satin chrome plate, counter top model. Side panels, bottom and back made in stainless steel. Top made in AISI 304 thickness 20/10. Rear flue made in enamelled cast-iron. designed for flush alignment. Recessed (4 cm) hotplate fully welded and sealed to the top. Hard chrome plated hotplate with mirror polished surface with cold zone at the front. Round hole and extractable drawer for grease drain and collection. Plate dim.335x530 mm. Heating by means of Incoloy 800 armored heating elements. Temperature control by means of thermostat. Safety thermostat. Lamp on control panel to indicate heating activation. Special design knobs to avoid water penetration in the control panel. Adjustable feet. IPX5 protection rating. Electric power supply VAC 400 3N 50÷60 Hz - 5.4 kW.

### Technical draw



E: Electric power