



Client _____ Quantity _____

Project _____ Position _____

FUN 700

Model: F70/40FTE/SR/T

Cod: MP01372123031

Technical data

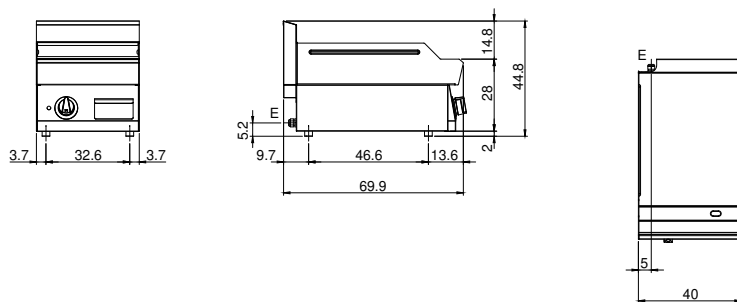
Modularity:	Top
Dimensions (mm):	400x700x300
Total electric power (kW):	4,5
Cooking zone dimensions 1 (LxD mm):	396x520
Electric power (V):	380-415
Ampere (A):	7
Phases:	3N
Cable section (mmq):	5G1,5
Frequency (Hz):	50-60
Net volume (m3):	0,084
Packing dimensions (mm):	477x776x612
Gross weight (kg):	47
Gross volume (m3):	0,227

Features

Working top:	Made of AISI 304 stainless steel with a thickness of 10/10 mm
Material of plate:	Satin chrome
Plate finish:	Ribbed
Knobs:	Knobs are made from a sturdy heat-resistant polymer blend and are equipped with liquid anti-leakage washer
Plate:	Satin chrome plate

Electric griddle with polished chromed grooved plate top version. Top made of AISI 304 stainless steel thickness 10/10; covering in AISI 304 stainless steel thickness 10/10; external reinforcements made of anti-corrosion material (aluminised sheet metal); bottoms and internal parts in AISI 430 steel; flue cover in enamelled steel. Chromed steel plate with high thermal conductivity for even temperature distribution. Equipped with front groove and pull-out drawer for collection of residual fats. Cooking zone equipped with 3 shielded heating elements which are thermostat controlled in a range of use from 50° to 300° C. Safety thermostat and indicator lights to show correct operation. - 3 plates x 1.5 kW - Total power 4.5 kW Cooking plate dimensions 395x550 mm. Electrical power supply VAC 400 + 3N 50÷60 Hz. Can be set up on bridge system, or on neutral base with optional doors

Technical draw



E: Electric power