

Client _____ Quantity _____
 Project _____ Position _____

FUN 600

Model: F60/60FTE/SLR/T

Cod: MP01372121020



Technical data

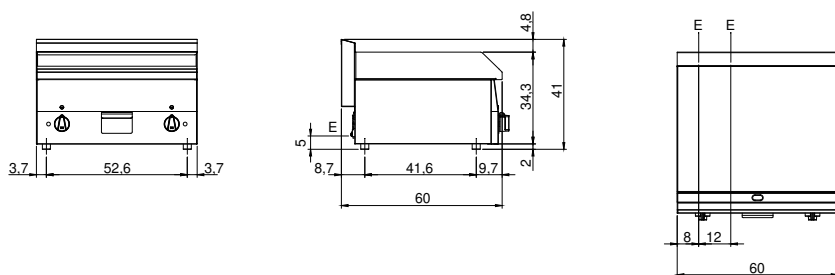
Modularity:	Top
Dimensions (mm):	600x600x300
Total electric power (kW):	6
Cooking zone dimensions 1 (LxD mm):	596x470
Electric power (V):	380-415
Ampere (A):	9,5
Phases:	3N
Cable section (mmq):	5G1,5
Frequency (Hz):	50-60
Net volume (m3):	0,108
Packing dimensions (mm):	676x695x630
Gross weight (kg):	47
Gross volume (m3):	0,296

Features

Working top:	Made of AISI 304 stainless steel with a thickness of 8/10 mm
Material of plate:	Satin chrome
Knobs:	Knobs are made from a sturdy heat-resistant polymer blend
Flue:	Made in a single piece, which facilitates the alignment of the modules
Liquid collection container:	Removable and dishwasher safe
Plate:	Satin chrome plate
Upright Splash guard:	On two sides

Electric griddle with polished chromed grooved plate. Top in AISI 304 stainless steel thickness 8/10; covering in AISI 430 stainless steel 8/10; bottoms and internal parts in AISI 430 steel; internal reinforcements made of anti-corrosion material. (aluminised sheet metal). Equipped with two independent cooking zones. Cooking hotplate in chromed steel with high thermal conductivity for even temperature distribution. Provided with front groove, extractable drawer for grease collection and splash guard on three sides. 3 shielded heating elements of 1.5 kW/ea. for each cooking zone. Thermostat adjustable from 50° to 300° C. Total power 9 kW. Electrical power supply V AC 400+3N 50÷60 Hz.

Technical draw



E: Electric power