

Client _____ Quantity _____
 Project _____ Position _____

FUN 600

Model: F60/30FTE/SL/T

Cod: MP01372121017



Technical data

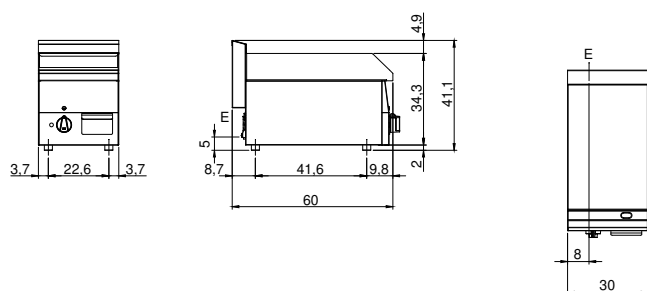
Modularity:	Top
Dimensions (mm):	300x600x300
Total electric power (kW):	3
Cooking zone dimensions 1 (LxD mm):	296x470
Electric power (V):	380-415
Ampere (A):	5
Phases:	3N
Cable section (mmq):	5G1,5
Frequency (Hz):	50-60
Net volume (m3):	0,054
Packing dimensions (mm):	376x695x596
Gross weight (kg):	26
Gross volume (m3):	0,156

Features

Working top:	Made of AISI 304 stainless steel with a thickness of 8/10 mm
Material of plate:	Satin chrome
Plate finish:	Smooth
Knobs:	Knobs are made from a sturdy heat-resistant polymer blend
Flue:	Made in a single piece, which facilitates the alignment of the modules
Liquid collection container:	Removable and dishwasher safe
Plate:	Satin chrome plate
Upright Splash guard:	On two sides

Electric griddle with satin chrome smooth plate on cabinet with door. Top made of AISI 304 stainless steel thickness 10/10; covering in AISI 304 stainless steel thickness 10/10; external reinforcements made of anti-corrosion material (aluminised sheet metal); bottoms and internal parts in AISI 430 steel; flue cover in enamelled steel. satin chrome steel plate with high thermal conductivity for even temperature distribution. Equipped with two independent cooking zones. Provided with front groove, extractable drawer for grease collection and splash guard on three sides. Cooking zone equipped with 3 heating elements which are thermostat controlled in a range of use from 50° to 300° C. Safety thermostat and indicator lights to show correct operation. - 6 plates x 1.5 kW Total power 9 kW. Cooking plate dimensions 695x550 mm. Electrical power supply VAC 400 + 3N 50÷60 Hz. Set up on cabinet with door.

Technical draw



E: Electric power