

Client _____ Quantity _____
 Project _____ Position _____

FUN 650

Model: F65/100FTG/SL/T

Cod: MP01372112016



Technical data

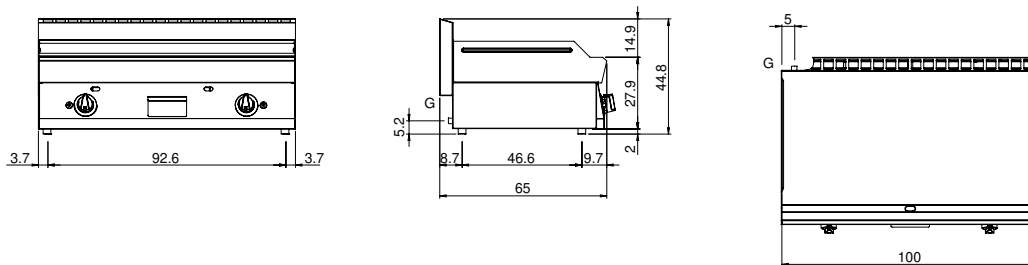
Modularity:	Top
Dimensions (mm):	1000x650x300
Total gas power (Kcal/h):	9803
Total gas power (kW):	11,4
Cooking zone dimensions 1 (LxD mm):	996x520
Gas connection:	1/2"
Net volume (m3):	0,195
Packing dimensions (mm):	1076x763x636
Gross weight (kg):	103
Gross volume (m3):	0,522

Features

Working top:	Made of AISI 304 stainless steel with a thickness of 10/10 mm
Material of plate:	Satin chrome
Plate finish:	Smooth
Knobs:	Knobs are made from a sturdy heat-resistant polymer blend and are equipped with liquid anti-leakage washer
Liquid collection container:	Removable and dishwasher safe
Plate:	Satin chrome plate
Upright Splash guard:	On two sides
Kit Gas:	Natural gas conversion kit 30/50 m/bar (tested with natural gas G20)

Gas griddle with satin chrome smooth plate on cabinet with door. Top made of AISI 304 stainless steel thickness 10/10; covering in AISI 304 stainless steel thickness 10/10; external reinforcements made of anti-corrosion material (aluminised sheet metal); bottoms and internal parts in AISI 430 steel; flue cover in enamelled steel. satin chrome steel plate with high thermal conductivity for even temperature distribution. Provided with front groove, extractable drawer for grease collection and splash guard on three sides. Equipped with steel burner with pilot burner with piezoelectric ignition. Gas supplied by means of thermostatic safety valve with thermocouple. - 1 burner x 5.7 kW. Plate dimensions 395x550 mm. Set up on cabinet with door.

Technical draw



G: Gas connection 1/2"