

Client \_\_\_\_\_ Quantity \_\_\_\_\_  
 Project \_\_\_\_\_ Position \_\_\_\_\_

## FUN 600

Model: F60/30FTG/SL/T

Cod: MP01372111010



### Technical data

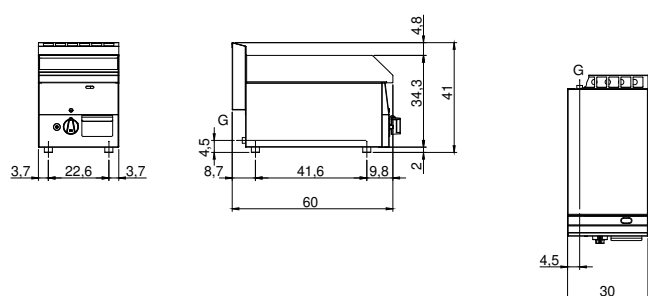
Modularity:	Top
Dimensions (mm):	300x600x300
Total gas power (Kcal/h):	4472
Total gas power (kW):	5,2
Cooking zone dimensions 1 (LxD mm):	296x470
Gas connection:	1/2"
Net volume (m3):	0,054
Packing dimensions (mm):	376x695x596
Gross weight (kg):	35
Gross volume (m3):	0,156

### Features

Working top:	Made of AISI 304 stainless steel with a thickness of 8/10 mm
Material of plate:	Satin chrome
Plate finish:	Smooth
Knobs:	Knobs are made from a sturdy heat-resistant polymer blend
Flue:	Made in a single piece, which facilitates the alignment of the modules
Liquid collection container:	Removable and dishwasher safe
Plate:	Satin chrome plate
Upright Splash guard:	On two sides
Kit Gas:	Natural gas conversion kit 30/50 m/bar (tested with natural gas G20)

Gas griddle with satin chrome smooth plate on cabinet with door. Top made of AISI 304 stainless steel thickness 10/10; covering in AISI 304 stainless steel thickness 10/10; external reinforcements made of anti-corrosion material (aluminised sheet metal); bottoms and internal parts in AISI 430 steel; flue cover in enamelled steel. satin chrome steel plate with high thermal conductivity for even temperature distribution. Equipped with two independent cooking zones. Provided with front groove, extractable drawer for grease collection and splash guard on three sides. Equipped with burners with pilot burners with piezoelectric ignition. Gas supplied by means of thermostatic safety valve with thermocouple. 2 burners x 5.7 kW and Total power 11.4 kW. Plate dimensions 695x550 mm. Set up on open cabinet.

### Technical draw



G: Gas connection 1/2"